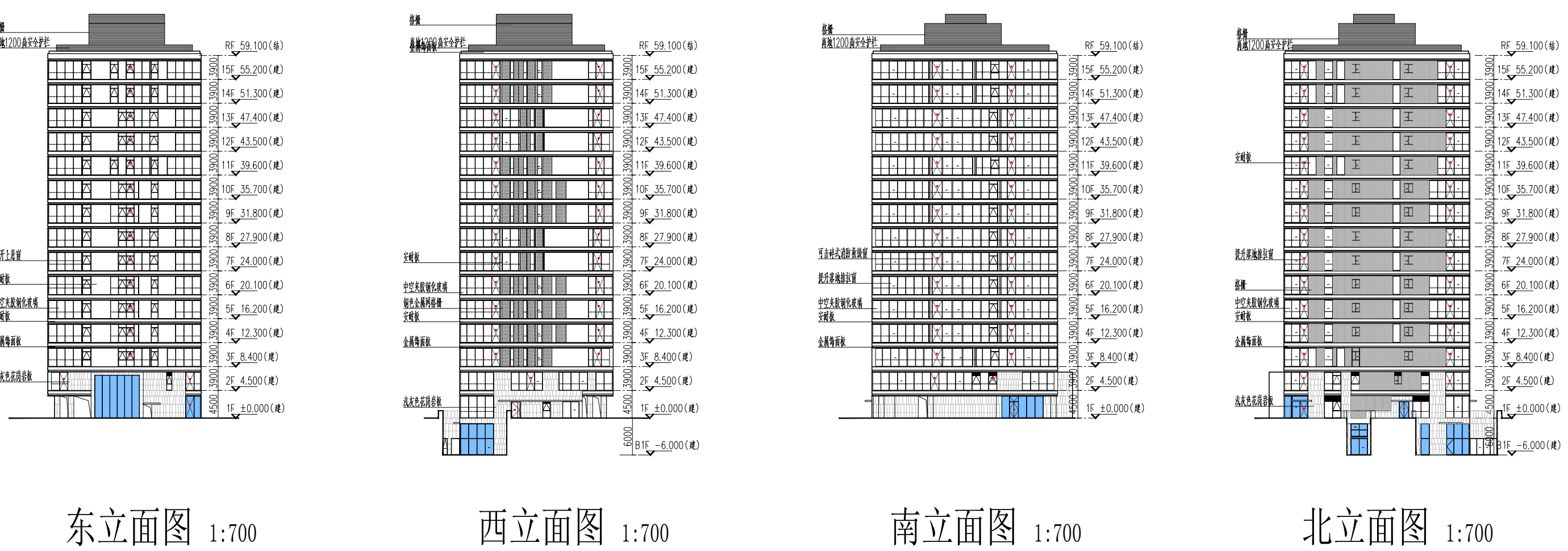


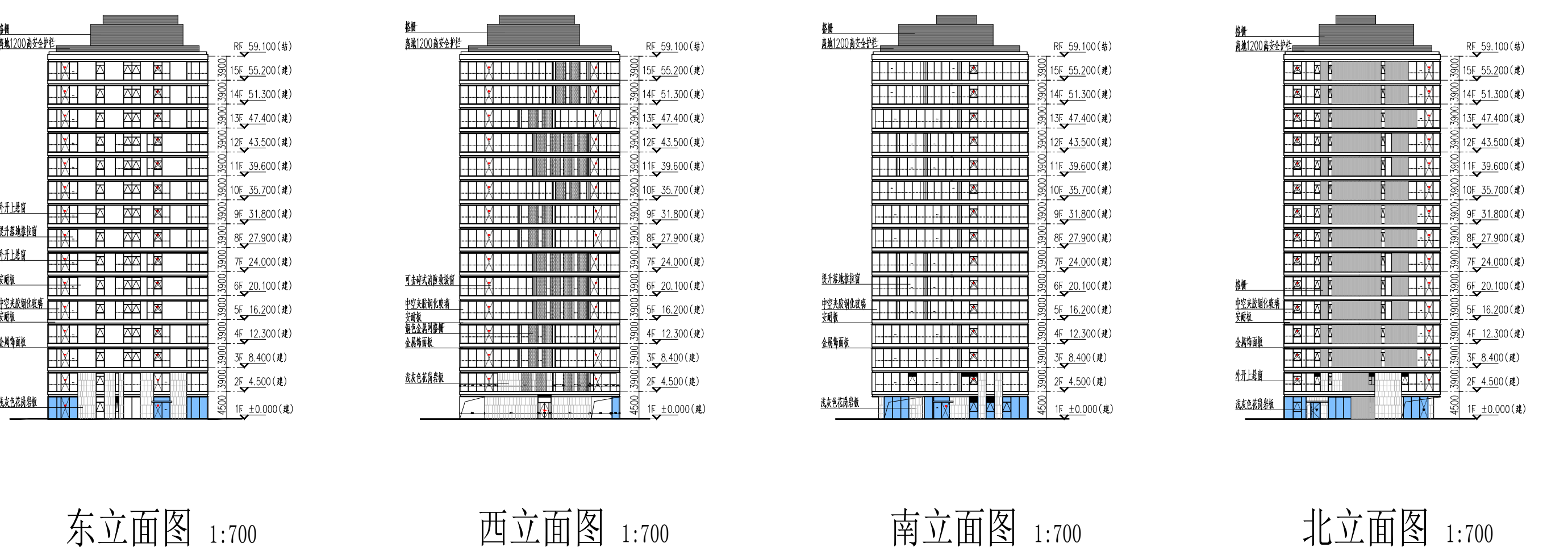
B. 项目经济技术指标 (已调查验收)				
项目		数量	单位	备注
房屋面积		57,583.00	m ²	
房屋层数		59,102.00	m ²	
	地上建筑层数 (计算有层)	34,168.20	m ²	
	低层办公商业用房	33,151.20	m ²	
	住宅、地下车库占地面积按楼占地面积	1,001.20	m ²	
其中	住宅	15.80	m ²	
	地下汽车库	60,324.62	m ²	
	地下汽车库	39,611.82	m ²	
其中	住宅	20,791.00	m ²	
	地下汽车库	531.80	m ²	
机动车停车位 (地下)		330.00	辆	无牌停车位

总平面图 1:1000

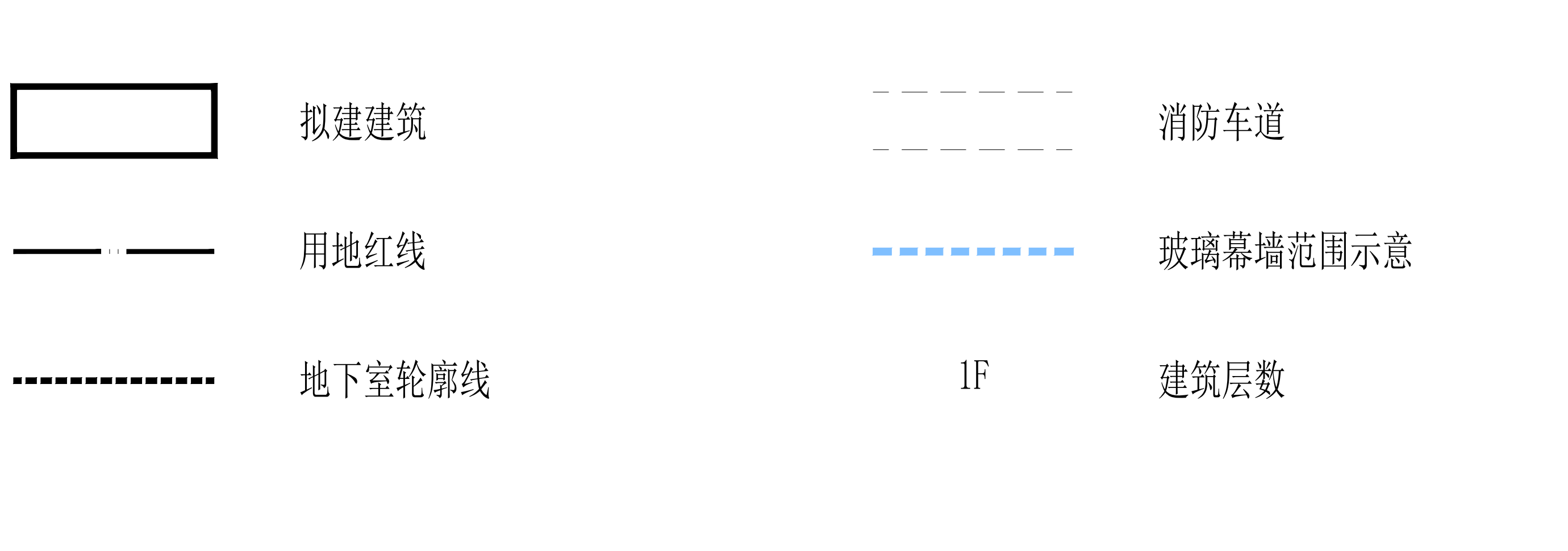
T2 楼玻璃幕墙区域立面示意图



T4 楼玻璃幕墙区域立面示意图



图例:



An architectural rendering of a modern building complex at the University of Hong Kong. The central focus is a large, multi-story building with a prominent, textured facade made of vertical, metallic-looking panels in shades of gold and brown. To its left is a taller, more traditional-looking building with a grid of windows. To the right, another modern building with a similar textured facade is visible. The foreground features a paved plaza with some greenery and a few people walking. The sky is clear and blue.

T8 楼玻璃幕墙区域立面示意图

